

RoHS Compliant

NOTE:

1. Material:

Body(Housing): Thermoplastics,UL94V-0(Color: Black,Halogen Free).
 Back cover1,2: Thermoplastics,UL94V-0(Color: Black,Halogen Free).
 Contact: Copper Alloy.
 Shell: Stainless Stell.
 Inner Spring: Stainless Stell.
 Latch: Stainless Stell.
 Contact Piece: Copper Alloy

2. FINISH:

Contact: Gold 30u" Plated on Contact Area,
 80u" Min. Bright Tin Plated on Solder Area
 30u" Min.Nickel Underplating Over All.
 Shell: 50u" Min. Pearl Nickel plated Over All.
 Latch: 50u" Min. Solderability Nickel plated Over All.
 Contact Piece: 50u" Min.Nickel underplated
 80u" Min. Bright Tin Plated Over All.

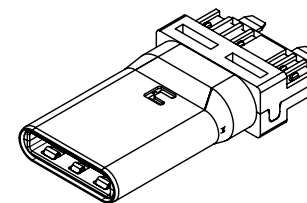
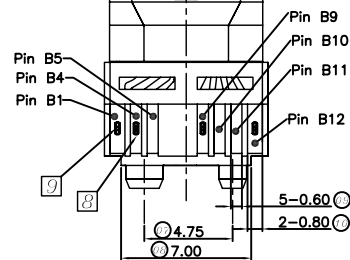
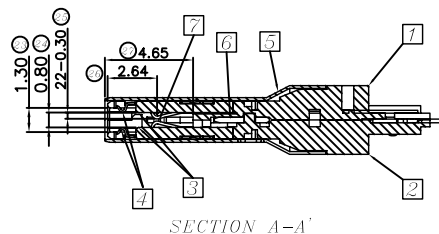
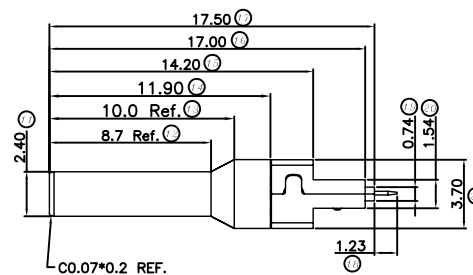
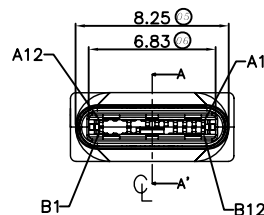
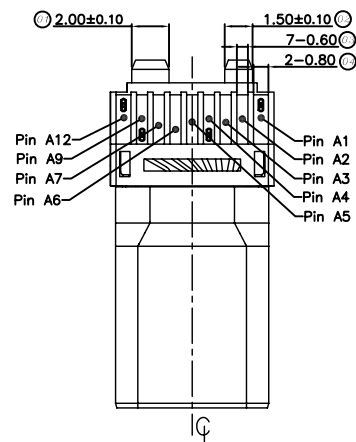
3. Specification:

3.1: Electrical:

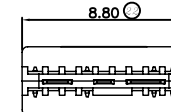
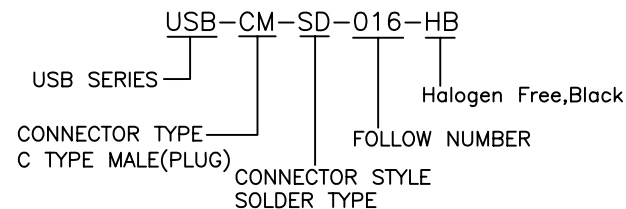
Insulation Resistance(EIA-364-21):
 100MΩ Min. at 100V/DC
 Contact Resistance(EIA-364-06): 50 mΩ Max.
 Dielectric Withstanding Voltage(EIA-364-20):
 No discharge, flashover or breakdown at 100V/AC 1Minute

3.2: Mechanical Characteristic:

Insertion Force: 20N MAX.
 Extraction Force: 0~1000 Cycles 8~20N. 1000~10000 Cycles 5~20N
 Durability :10000 Cycles



Ordering Information



PIN ASSIGNMENT

CONTACT PIN NUMBER	SIGNAL NAME
A1,A12,B1,B12	GND
A4,B4,A9,B9	VBUS
A2	SSTXp1
A3	SSTXn1
A5	CC1
A6	Dp1
A7	Dn1
A8	SBU1
A10	SSRXn2
A11	SSRXp2
B2	SSTXp2
B3	SSTXn2
B5	CC2
B8	SBU2
B10	SSRXn1
B11	SSRXp1

9	A1,B1,A12,B12 Contact piece	GUB87B-1B1-VS12	镀亮锡80u" Min.	1PCS
8	A4,B4,A9,B9 Contact piece	GUB87B-1A1-VS12	镀亮锡80u" Min.	1PCS
7	Terminal	GUB86D-1A1-VP30 GUB86D-1B1-VP30	接触区镀金30u" 焊接区镀亮锡80-150u"	9PCS 7PCS
6	Latch	GUB65U-1E1-VN12	镀可焊镍50u" Min.	1PCS
5	Shell	GUB58U-1B1-SC12	不锈钢,镀珍珠镍50u" Min.	1PCS
4	Inner Spring	GUB64U-1B1-VX00	不锈钢,无电镀	2PCS
3	Body	HUB58L-1A1-BX00-H HUB58L-1B1-BX00-H	一半式护套A1款, LCP 黑色 一半式护套B1款, LCP 黑色	1PCS 1PCS
2	Molding Bottom Cover	HUT65L-1B1-BM30-H	LCP 黑色 端子镀金30u"	1PCS
1	Molding Top Cover	HUT65L-1A1-BM30-H	LCP 黑色 端子镀金30u"	1PCS
项次 NO.	品称 NAME	料号 P/N	表面处理 PLATING	备注 MARK

單位 SCALE	mm	* Inspection Item	SHINE HER 星赫科技有限公司 SHINE HEH TECHNOLOGY CO., LTD.
比例	1:1	■ Cp/Cpk and SPC Control Item	圖號 Dwg. No. USB-CM-SD-016-HB
張數 SHEET	1/1	TOLERANCE UNLESS OTHERWISE SPECIFIED	名稱 TITLE USB3.1 C TYPE 2.0 & 3.0 2 IN 1 PLUG SOLDER TYPE (帶接夾, 无PCBA, 外売拉伸軟, 半套完機30u")
製圖 DRAWN	Lxb	.XX±0.30 .X'±3'	角法 PROJ.
版本 REV.	NEW ISSUE	.XX±0.25 .X'±1'	客户图
	設變內容 MODIFICATION	.XXX±0.10 .XX'±	
	日期 DATE		
	修改 DRAW		
	核准 APPROVE		
	審核 CHECKED		