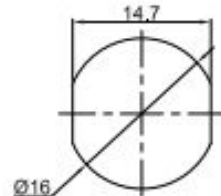
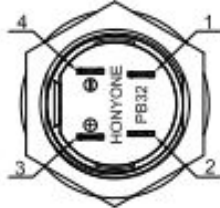
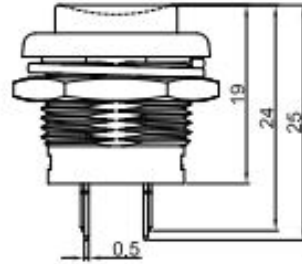
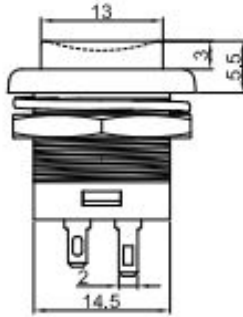


PB32

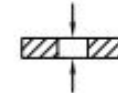
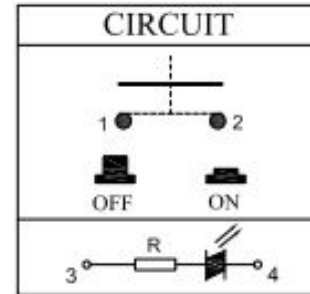


CUT-OUT

Switch Specifications

Rating: 3A 250VAC/125VAC ;
3A 30VDC

Contact Resistance: 50mΩ Max. ;
Dielectric Strength: 2000VAC For 1 minute ;
Total Travel: 3±0.5mm ;
Operating Force: 450±150gf ;
Mechanical Life: 50,000 cycles ;
Load Life: 10,000 cycles ;
Operating Temperature: -20°C~70°C ;
Function: OFF-ON



Panel Thickness: 5mm MAX.

MATERIAL:

Actuator: PC ;
Top Base: PA66, UL rated: 94V-0 Min. ;
Bottom Base: PA66, UL rated: 94V-0 Min. ;
Terminal: Brass, Silver plated ;
Nut: Brass, Ni plated .



星赫科技有限公司
SHINE HEH TECHNOLOGY CO., LTD.

LED Specifications

LED 类型	双向LED灯珠 (交直流通用)					U	V	W	L		
	DC3V	DC6V	DC24V	DC36V	AC110V						
寿命	40000小时 (参考值)					G	纯绿色	3.0	3.2	3.4	15
额定电压	DC3V	DC6V	DC24V	DC36V	AC110V	Y	黄色	1.8	2.0	2.4	15
	DC12V				AC220V	R	红色	1.8	2.0	2.4	15
额定电流	约15mA		约15mA		约3mA	灯发光颜色 X Emitted color X	最小	一般	最大	额定 电流 (mA)	
降压方式	LED内集成电阻		采用3V灯, 需在灯座上接电阻		顺向电压(V)						

W1	白色	6.0	7.5	9.5	15
U1	蓝色	6.0	7.5	9.5	15
G1	纯绿色	6.0	7.0	8.5	15
Y1	黄色	6.0	7.0	8.5	15
R1	红色	6.0	7.0	8.5	15
W	白色	3.0	3.2	3.4	15