

NOTE:

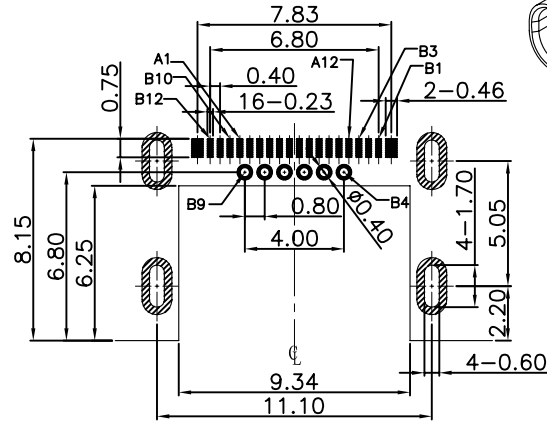
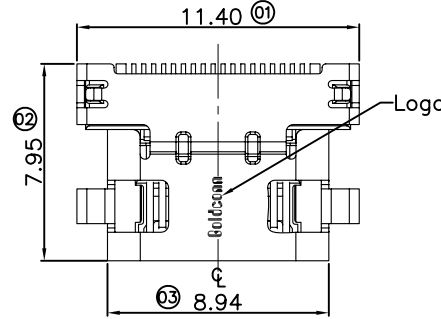
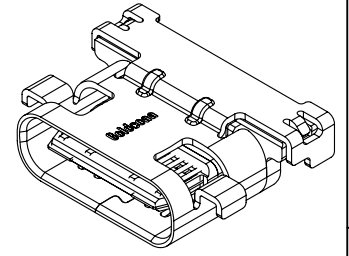
- Material:
 - Body(Housing): Thermoplastics,UL94V-0(Color: Black,Halogen Free).
 - Upper or lower Molding Housing: Thermoplastics,UL94V-0(Color: Black,Halogen Free).
 - Contact: Copper Alloy
 - Outer Shell: Copper Alloy
 - Mid Shield Plate:Stainless Stell.
 - EMC PAD: Stainless Stell.

- FINISH:
 - Contact: Au 30u" Plated on Contact Area, 80u" Min. Bright Tin Plated on Solder Area, 50u" Min.Nickel Underplating Over All.
 - Outer Shell: 50u" Min. Solderability Nickel plated Over All.
 - Mid Shield Plate: 50u" Min. Solderability Nickel plated over All

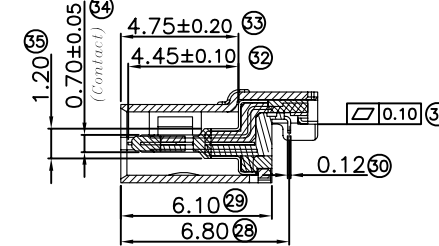
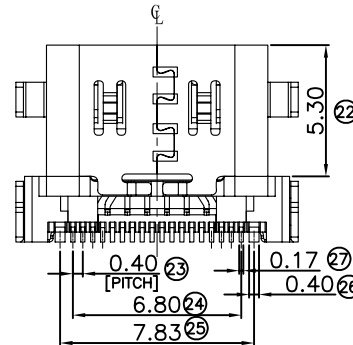
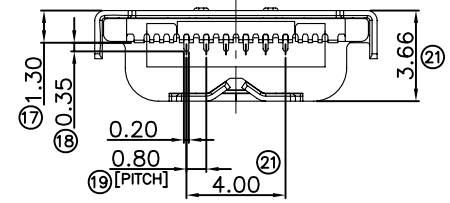
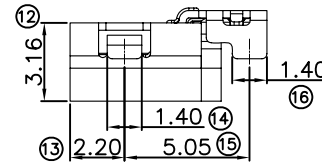
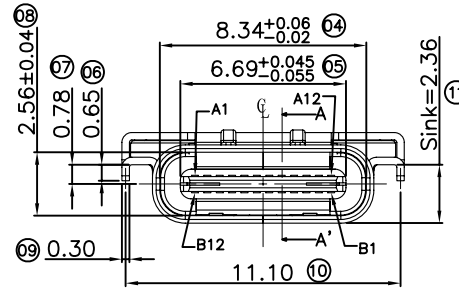
- Specification:
 - Electrical:
 - Current Rating: 5A For Pin(A4,A9,B4,B9), 1.25A For Others Pin
 - Insulation Resistance(EIA-364-21): 100MΩ Min. at 100V/DC
 - Contact Resistance(EIA-364-06): 50 mΩ Max.
 - Dielectric Withstanding Voltage(EIA-364-20): No discharge, flashover or breakdown at 100V/AC 1Minute
 - Mechanical Characteristic:
 - Insertion Force: 5~20N
 - Extraction Force: 0~1000 Cycles 8~20N. 1000~10000 Cycles 5~20N
 - Durability :10000 Cycles
- Recommended process IR REFLOW:260°C, 3-5seconds.

Ordering Information
 USB CF SMD -008-HB

USB SERIES Halogen Free,Black
 CONNECTOR TYPE FOLLOW NUMBER
 C TYPE FEMALE(Receptacle)
 CONNECTOR STYLE
 SMT+DIP TYPE



RECOMMENDED PCB LAYOUT(TOP VIEW)
 GENERAL TOLERANCES:±0.05
 PCB THICKNESS:0.8mm



| PIN NUMBER | SIGNAL NAME | PIN NUMBER | SIGNAL NAME |
|------------|-------------|------------|-------------|
| A1 | GND | B12 | GND |
| A2 | SSTxp1 | B11 | SSRxp1 |
| A3 | SSTxn1 | B10 | SSRxn1 |
| A4 | VBUS | B9 | VBUS |
| A5 | CC1 | B8 | SBU2 |
| A6 | D+ | B7 | D- |
| A7 | D- | B6 | D+ |
| A8 | SBU1 | B5 | CC2 |
| A9 | VBUS | B4 | VBUS |
| A10 | SSRxn2 | B3 | SSTxn2 |
| A11 | SSRxp2 | B2 | SSTxp2 |
| A12 | GND | B1 | GND |

| | | | |
|------|-----|--------------------------------------|--|
| 單位 | mm | ☒ Inspection Item | SHINE HER 星赫科技有限公司 SHINE HEH TECHNOLOGY CO., LTD. |
| 比例 | 1:1 | ☐ Cp/Cpk and SPC Control Item | |
| 張數 | 1*1 | TOLERANCE UNLESS OTHERWISE SPECIFIED | 圖號 |
| 製圖 | Zuj | .X±0.25 .X'±3' | 名稱 |
| 版本 | | .XX±0.20 .X'±1' | USB3.1 C Type Receptacle (Sink 2.36) |
| REV. | | .XXX±0.10 .XX± | 角法 |
| | | | 客户图 |

| | | | | |
|------|--------------|----------|------|---------|
| AO | NEW ISSUE | 15.08.31 | | |
| 版本 | 設變內容 | 日期 | 修改 | 核准 |
| REV. | MODIFICATION | DATE | DRAW | APPROVE |
| | | | 審核 | THROUGH |